

RICC | Regional Industry Caribou Collaboration

The main cause of caribou declines across most of their ranges is excessive predation, mostly by wolves. The current high predation levels are a result of many complex and interacting factors, including landscape level habitat changes (both natural and human-caused). For any caribou recovery program to be successful, it has to address the full range of habitat and population factors impacting caribou, and it must be implemented at the broad range scale to ultimately spur caribou population growth over time.

The Regional Industry Caribou Collaboration (RICC) is a group of energy companies and a forestry company in the oil sands region of northeast Alberta that are working together across their project boundaries to:



Restore caribou habitat on legacy seismic lines



Conduct research on caribou ecology and their relationships with other parts of the landscape



Lead trials on restoration methods, effectiveness and how wildlife respond to restoration

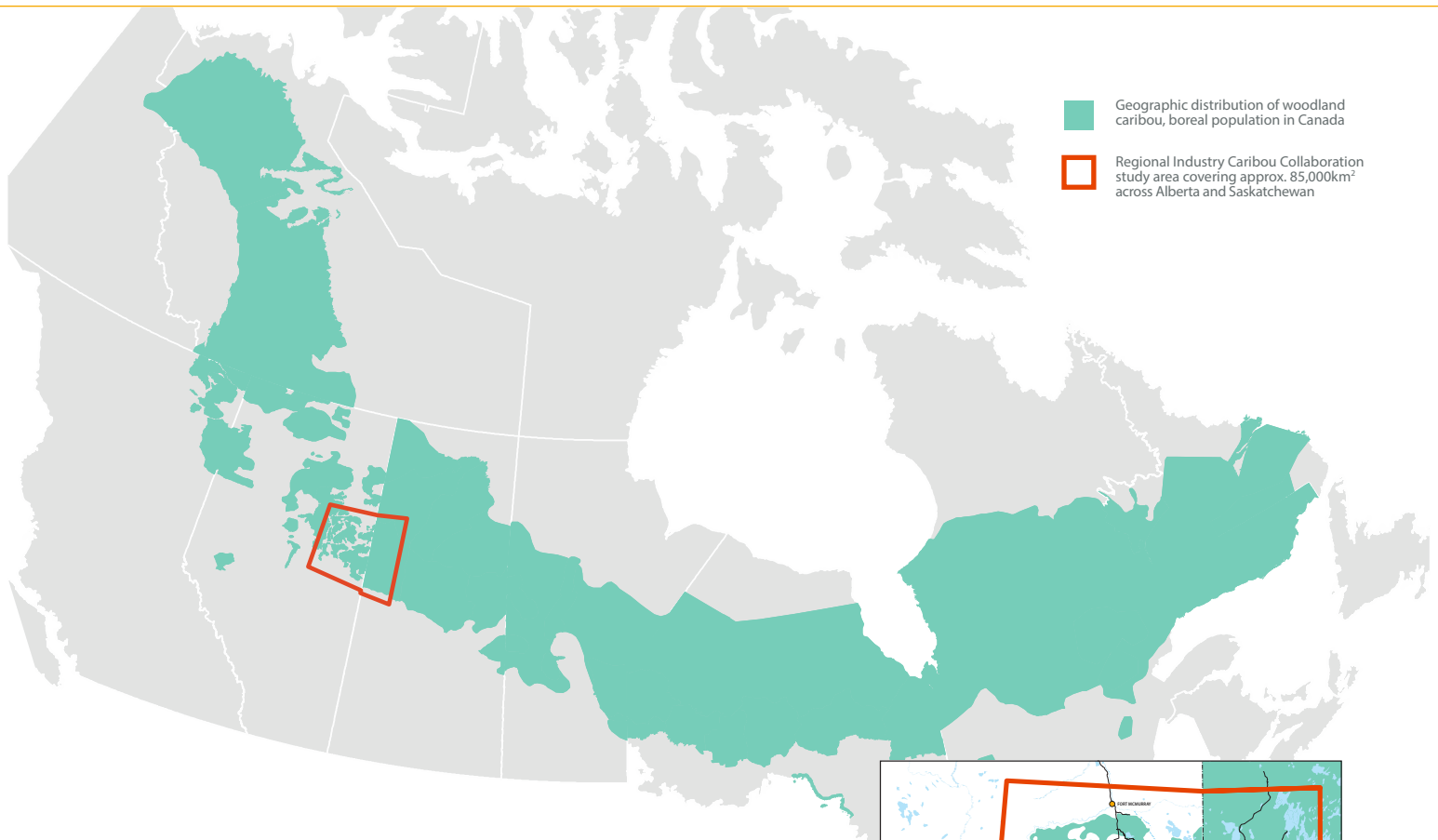
Reversing the decline of caribou requires a focused, science-based strategy that involves multiple partners at many levels. RICC brings together energy and forestry companies, government agencies, academia, and 3rd party consultants to contribute to the recovery of boreal woodland caribou and their habitat.

“ Caribou conservation is a shared government, public and private sector responsibility, led by government. A comprehensive, integrated partnership approach is needed to commit financial and other resources, in a manner which maximizes their effectiveness. ”

– A Woodland Caribou Policy for Alberta, Government of Alberta

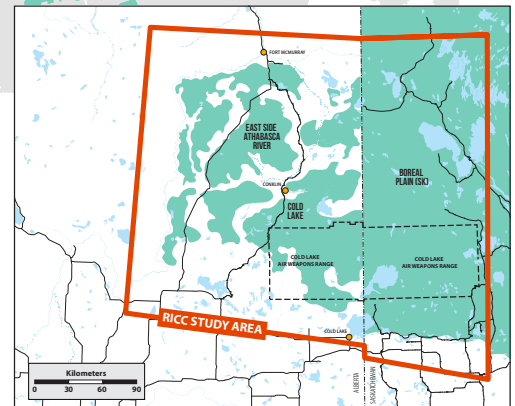
By the end of 2017, RICC members had implemented restoration treatments on over 1,000 kms of legacy seismic lines in Alberta's boreal forest and planted over 1 million trees.





RICC STUDY AREA

The RICC study area covers approximately 85,000 km² in the Cold Lake and East Side Athabasca River (ESAR) boreal woodland caribou ranges.



CURRENT RICC PROJECTS

Large-scale habitat restoration: Since 2012, the year RICC was formed, member companies have led or collaborated on large-scale habitat restoration projects spanning multiple townships

Prioritizing habitat restoration: Creating a process to help improve the efficiency of restoration resource allocation.

Wildlife monitoring: Monitoring wolf movements to understand how these predators use seismic lines to hunt caribou

Wildlife-landscape research: Conducting research on deer, moose, caribou, wolf, black bear, and landscape patterns to better understand how these inter-relationships affect caribou populations

Data sharing: Improving internal and external RICC planning, collaboration and communication.

RICC MEMBERS

Devon Canada
 Alberta-Pacific Forest Industries
 Athabasca Oil Corporation
 Canadian Natural Resources Limited
 Cenovus Energy
 Imperial
 MEG Energy
 Nexen
 Suncor Energy

